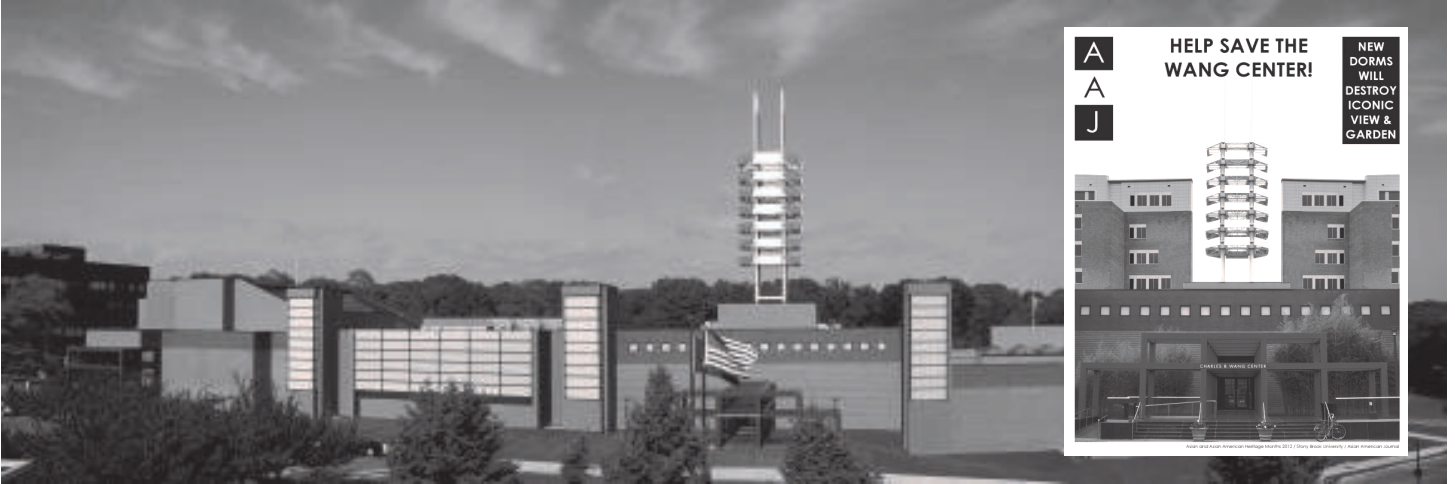
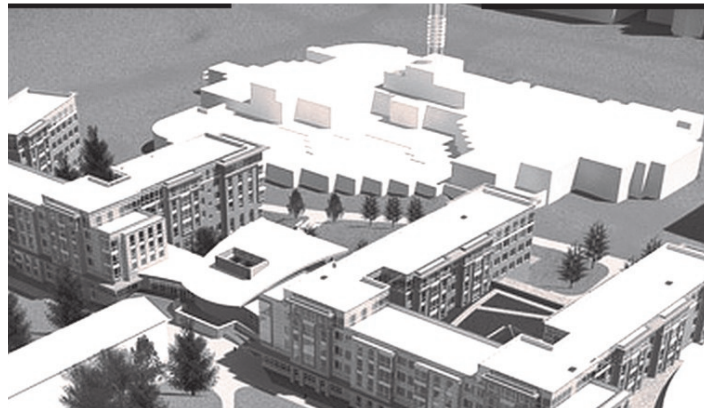


# SAVE THE WANG CENTER



FSA/SBU has planned four 6-story dorms behind Wang Center. If allowed, looking out at the garden would be seeing 4 stories of brick walls above Wang's red trellises, not trees and sky. In warm weather the serenity would be a cacophony of sounds flowing out student's windows. Wang's pagoda sculpture "Tower to Heaven" has become SBU's icon, used on campus brochures and web pages because its uniqueness distinguishes us. Its holographic sides change colors with



the sun's rays and angle. That's why it was designed to begin over the tree line with sky as its backdrop. Instead, 6 stories of brick walls would reach halfway up the pagoda's height. A \$60 million+ gift to honor his heritage and that of all Asian Americans, a "home away from home for international students" and a place where

Americans could learn about Asia "simply by being in the building", these dorms were planned without telling the donor, the Asian/Asian American community, or anyone who appreciates the beauty. FSA's only focus groups were about food! Tell the President to build these dorms by LaValle Stadium! It's a similar space nearby, will cost the same, but will not screw Wang! Like, Share & Message your friends to show him the world is watching! Send an e-mail: "If Wang gets screwed I'll never be a donor you can screw too."

[Samuel.Stanley@stonybrook.edu](mailto:Samuel.Stanley@stonybrook.edu)

[www.aazine.org/SaveWang](http://www.aazine.org/SaveWang)

[www.facebook.com/SaveWang](http://www.facebook.com/SaveWang)

